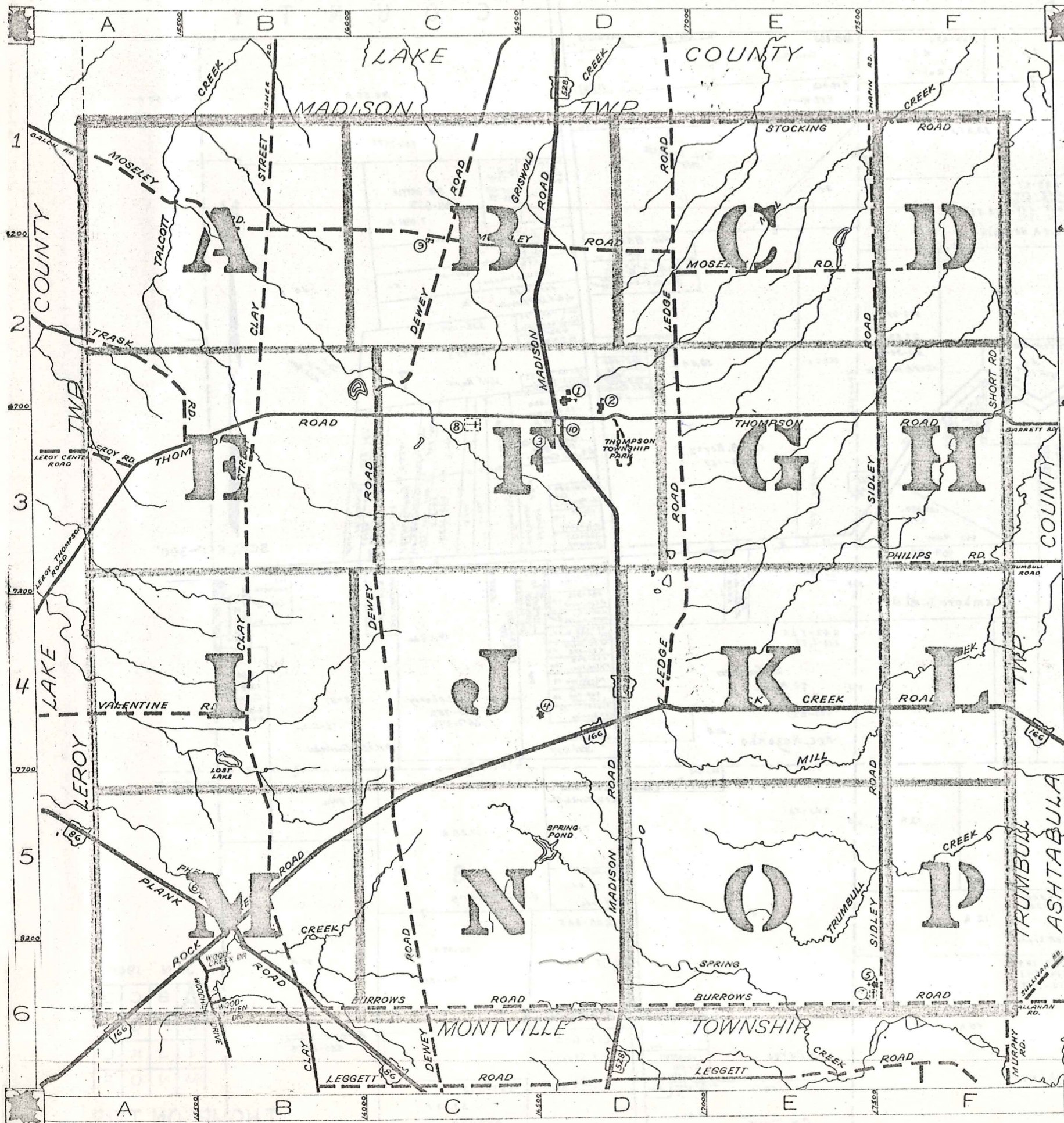


# ROAD INDEX

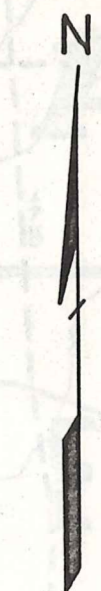
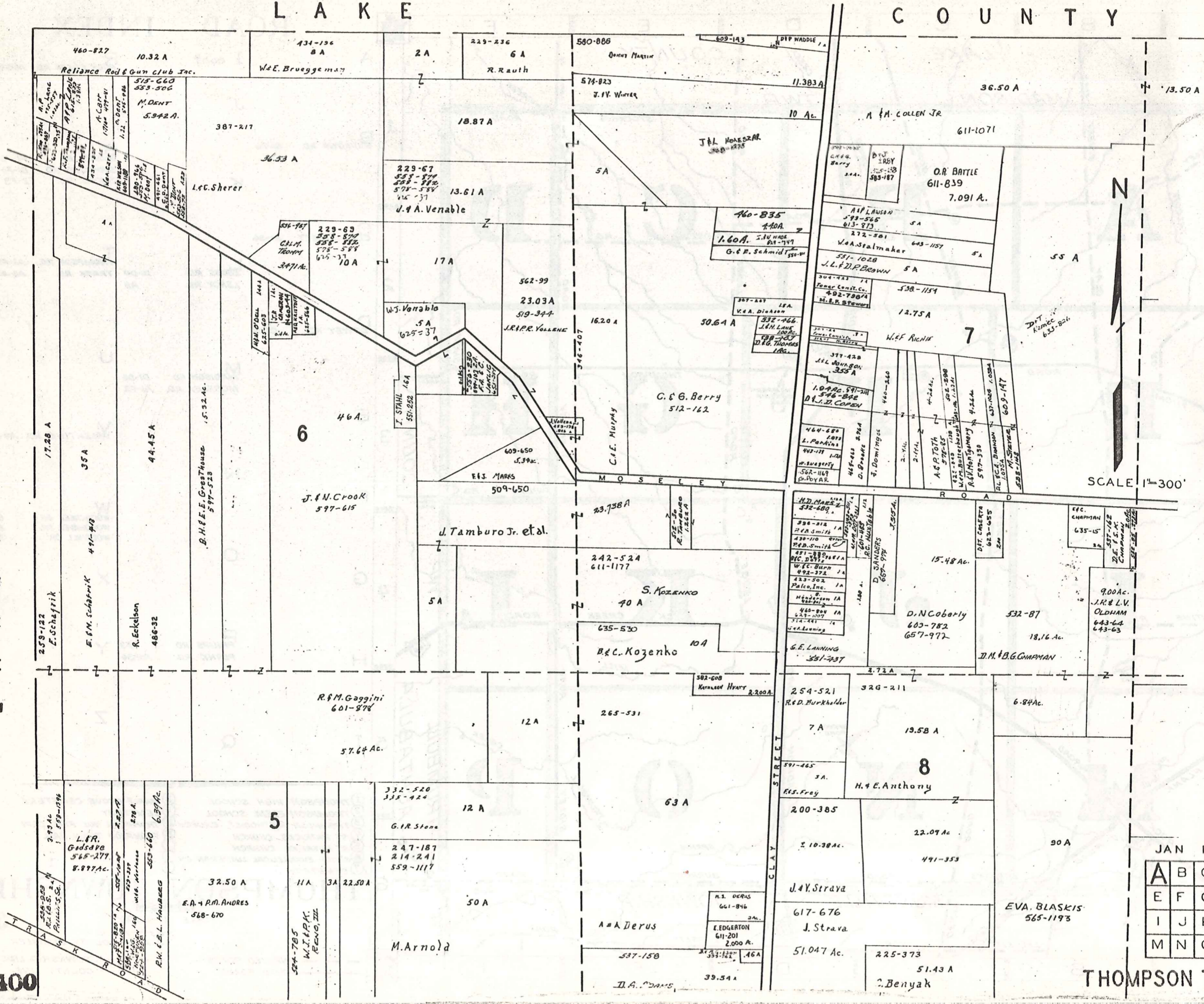


A	I cont.	R	ROCK CREEK RD. A6-F4
B	J	S	SIDLEY RD. F1-F6 STOCKING RD. DI-F1 SHORT RD. F2-F3
C	K	T	THOMPSON RD. A3-F3 TRASK RD. A2-A3
D	L	U	LEGE RD. DI-D4 LEREY RD. A3
E	M	V	VALENTINE RD. A4-B4
F	N	W	WOODCREEK DR. B6 WOODHAVEN DR. B6 WOODHILL DR. B6
G	O	X	
H	P	Y	PHILIPS RD. F3 PLANK RD. A5-B6
I	Q	Z	

- ① THOMPSON HIGH SCHOOL
- ② THOMPSON ELEM. SCHOOL
- ③ THOMPSON METHODIST CHURCH
- ④ ST. PATRICKS CHURCH
- ⑤ ST. PATRICKS CHURCH
- ⑥ GRACE EVANGELICAL LUTHERAN CH.
- ⑦ CEMETERY
- ⑧ MAPLE GROVE CEMETERY
- ⑨ CEMETERY
- ⑩ THOMPSON VOL. FIRE DEPT.
- ⑪ THOMPSON TOWN HALL

**THOMPSON TOWNSHIP**  
 SCALE: 1" = 2000'  
 O.J. ROBINSON  
 GEauga COUNTY ENGINEER

--- UNPAVED ROADS  
 --- PAVED ROADS  
 --- TOWNSHIP LINE  
 --- COUNTY LINE

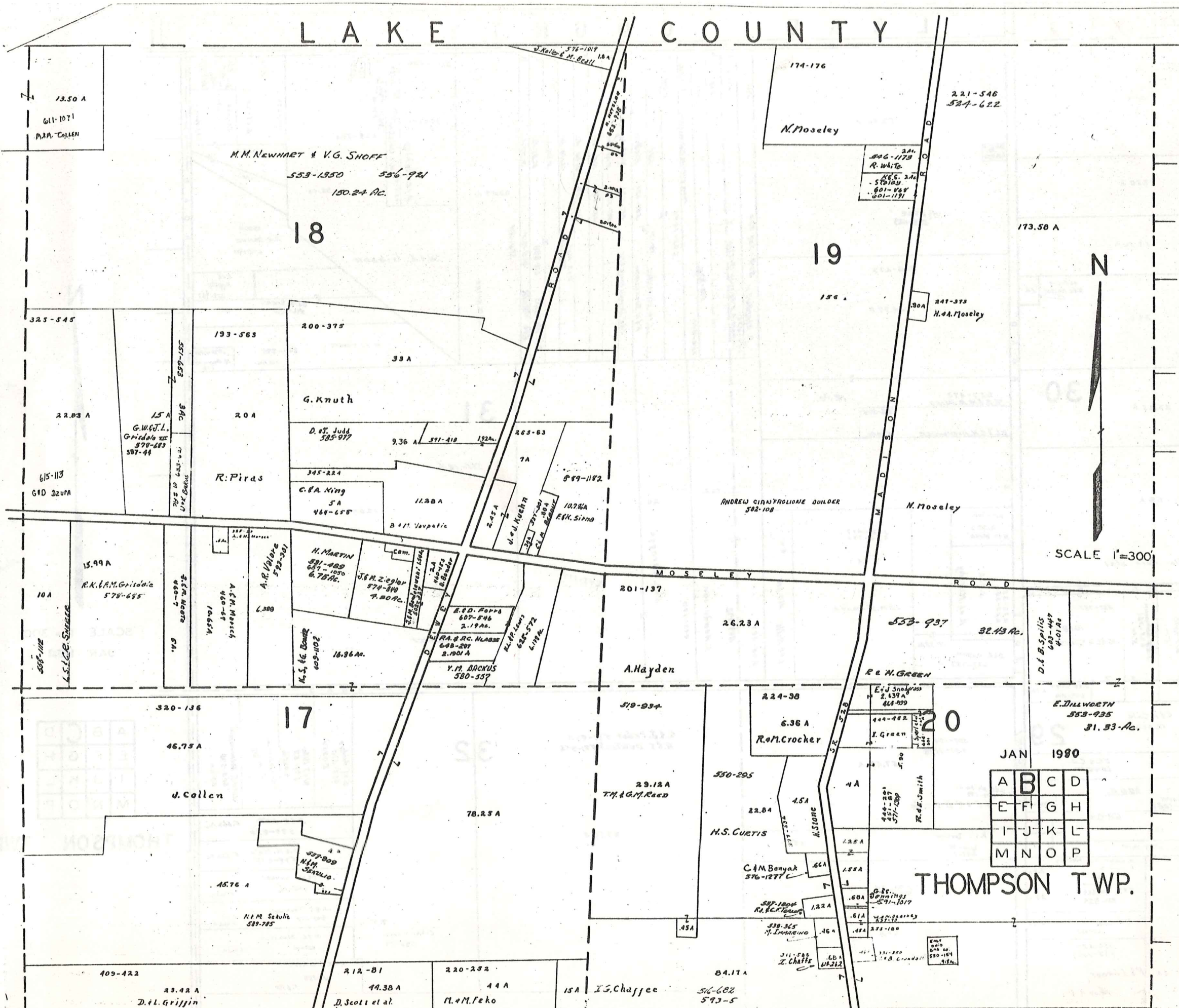


JAN 1980

A	B	C	D
E	F	G	H
I	J	K	L
M	N	O	P

THOMPSON TWP.

# L A K E C O U N T Y



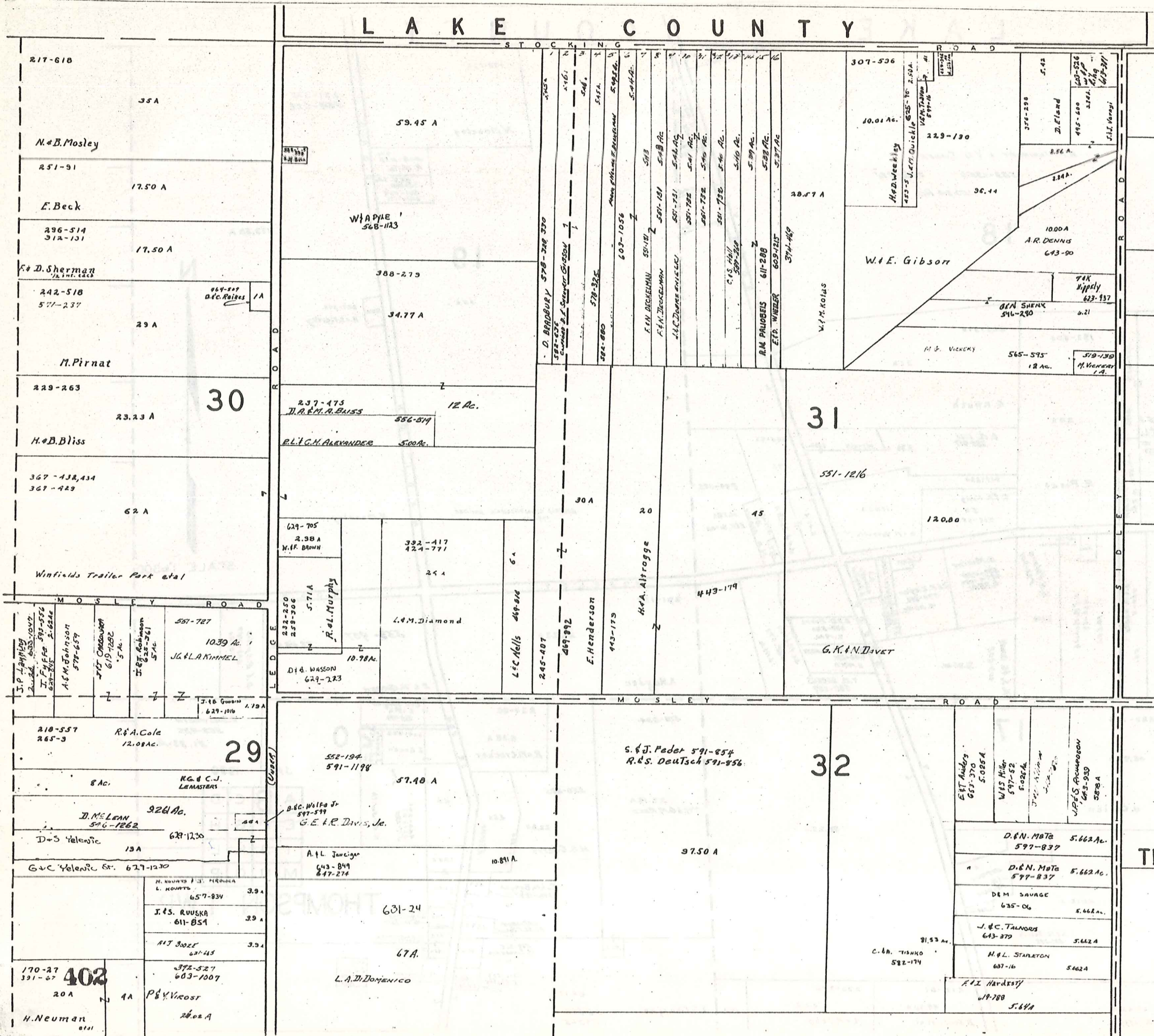
SCALE 1"=300'

JAN 1980

A	B	C	D
E	F	G	H
I	J	K	L
M	N	O	P

## THOMPSON TWP.

# L A K E C O U N T Y



SCALE 1" = 300'  
JAN 1980

A	B	C	D
E	F	G	H
I	J	K	L
M	N	O	P

THOMPSON TWP

L A K E C O U N T Y

STOCKING ROAD

551-415  
T.L.S. Patti  
2.82 Ac.

8.75 A

452-310

17 A

J.J. Kopp

601-1143  
E.L. Turner 5 Ac.

19.21 A

508-603  
D.A. Hauser

50.04 A

609-1041

6.13 A

A.P. Lehman

355-101

10 A

E.O. Saelke

417-490

666 A

C. Holy

417-492 J.C. Holy 1.44 A

409-1020

22.52 A

A. Holy

335-1

5.48 A

F.S. Holy

MOSELEY ROAD

205-264

60 A

C. Jersey

524-168  
M.W. Woods  
5.00 Ac.

41

552-97

253.55 A

K.E. & R.W. Kangas

Match Line

399-123  
653-100  
25 A  
E.P. Kaminski  
O.W. O'Reilly  
601-1066

515-068

62.15 A

Paul & Joyce  
Cook 619-125

42

50 A

538-955

CHRISTIAN CAMPING, INC.

100 A

542-99

E.A. MORGANSTERN  
40 A

A S H T A B U L A C O U N T Y

SHORT ROAD



SCALE 1" = 300'

JAN 1980

A	B	C	D
E	F	G	H
I	J	K	L
M	N	O	P

THOMPSON TWP.

Match Line

403



G.W. Roush

409-427

23.42 A

D.L. Griffin

17

220-252

174-371

J.G. Chaffee

84.17A  
516-602  
579-5

20

W.M. Starkey 172

430-632

385-507

126-410

M.J. Wilson

170-27

N

20A

9A

30A

46A

16A

SCALE 1" = 300'  
JAN 1980

F. GARROUSEK  
556-527  
637-350

H. Scott

M.M. Fako

T.B. R. Keaty 492-900

R. Green

203-632

272-290

21.53 A

16 A

Bd. of Education

DETAILS  
Z  
I  
S  
Q

H.R. Crandall et al.

31.84 Ac.

H. Crandall  
877-911  
3-11A

R.H. Crandall  
888-228

427-879  
R.T. STEWART

427-879  
R.T. STEWART

427-879  
R.T. STEWART

427-879  
R.T. STEWART

427-879  
R.T. STEWART

427-879  
R.T. STEWART

427-879  
R.T. STEWART

427-879  
R.T. STEWART

427-879  
R.T. STEWART

427-879  
R.T. STEWART

427-879  
R.T. STEWART

427-879  
R.T. STEWART

427-879  
R.T. STEWART

427-879  
R.T. STEWART

427-879  
R.T. STEWART

427-879  
R.T. STEWART

427-879  
R.T. STEWART

427-879  
R.T. STEWART

427-879  
R.T. STEWART

427-879  
R.T. STEWART

427-879  
R.T. STEWART

E. Bascia  
378-544  
410-361  
410-361  
410-361

30.35 Ac. 453-400  
N. Folburn

380-344  
J.W.  
S.D. Cutlip  
410-361  
410-361

380-344  
J.W.  
S.D. Cutlip  
410-361  
410-361

513-750  
877-914  
N.H. Crandall

25.806 A

E. NARRIS

8374A

255-415

8.07A

6.30 A

70.33 A

P.M. Nikavcic

22.04

J.F. SEQUIN  
551-239 60A

110.02 A

D. Milkavcic ETAL  
582-70

233-110  
133-0  
520-1013  
524-780

50A

H.M. Kmetyko

80-198

9A

Cemetery

199-307

98.77Ac.

469-434

R.P. Sidley

H. Andrews

43A

15A

10A

20A

13A

10A

10A

10A

10A

10A

10A

10A

10A

10A

10A

10A

10A

10A

10A

10A

10A

10A

10A

10A

10A

10A

10A

10A

10A

10A

10A

10A

10A

10A

10A

10A

10A

10A

10A

10A

10A

10A

10A

10A

10A

10A

10A

10A

10A

10A

10A

10A

10A

10A

10A

10A

10A

10A

10A

10A

10A

10A

10A

10A

10A

10A

10A

10A

10A

10A

10A

10A

10A

10A

10A

10A

10A

10A

10A

10A

10A

10A

10A

10A

10A

10A

10A

10A

10A

10A

10A

10A

10A

10A

10A

10A

10A

10A

10A

10A

10A

10A

10A

10A

10A

10A

10A

10A

10A

10A

10A

10A

10A

10A

10A

10A

10A

10A

10A

10A

10A

10A

10A

10A

10A

10A

10A

10A

10A

10A

10A

10A

10A

10A

10A

10A

10A

10A

10A

10A

10A

10A

10A

10A

10A

10A

10A

10A

10A

10A

10A

10A

10A

10A

10A

10A

10A

10A

10A

10A

10A

10A

10A

10A

10A

10A

10A

10A

10A

10A

10A

10A

10A

10A

10A

10A

10A

10A

10A

10A

10A

10A

10A

10A

10A

10A

10A

10A

10A

10A

10A

10A

10A

10A

10A

10A

10A

10A

10A

10A

10A

10A

10A

10A

10A

10A

10A

10A

10A

10A

10A

10A

10A

10A

10A

10A

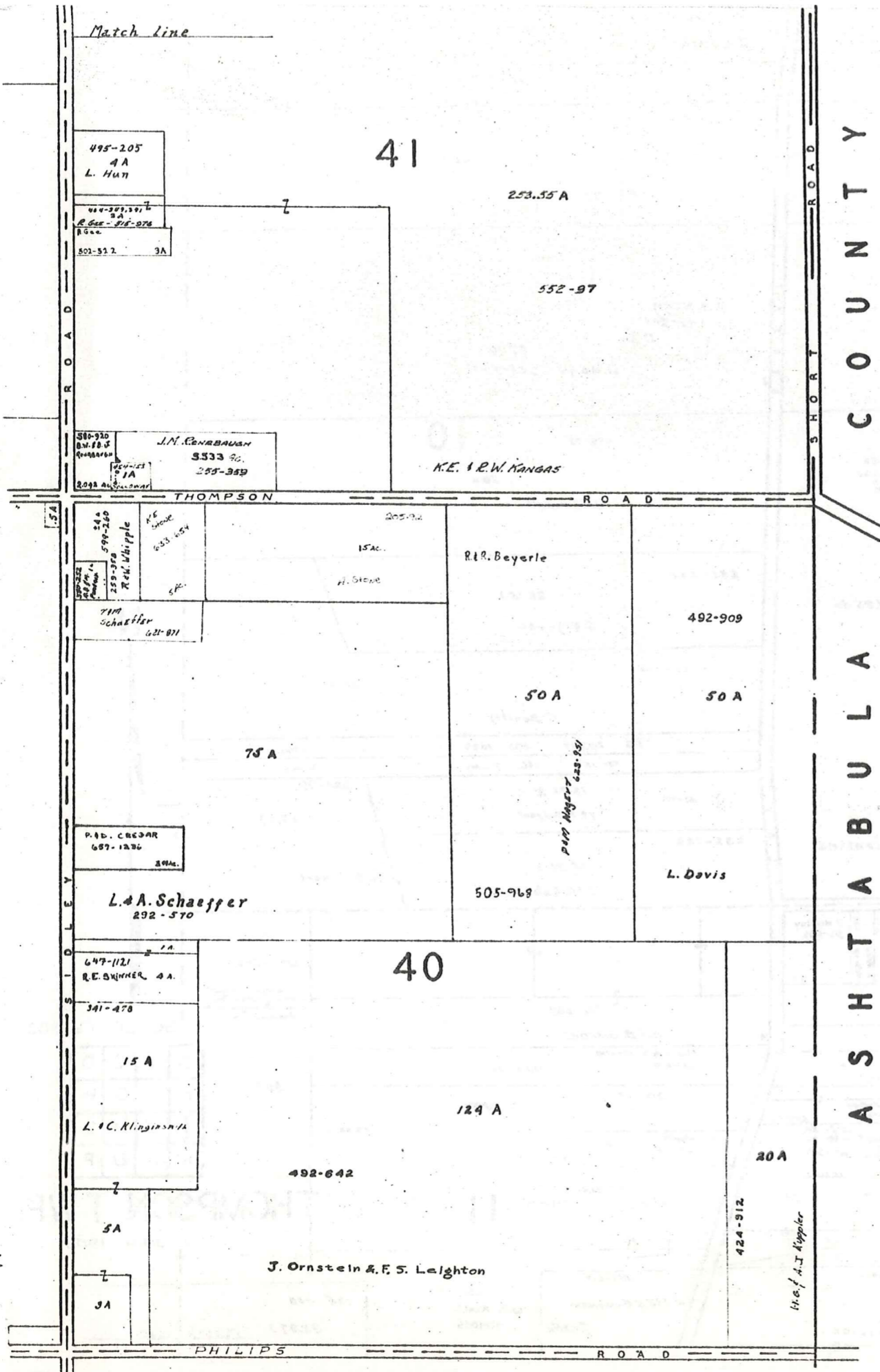
10A

10A

10A

</





Match Line

Match Line

SHORT COUNTY

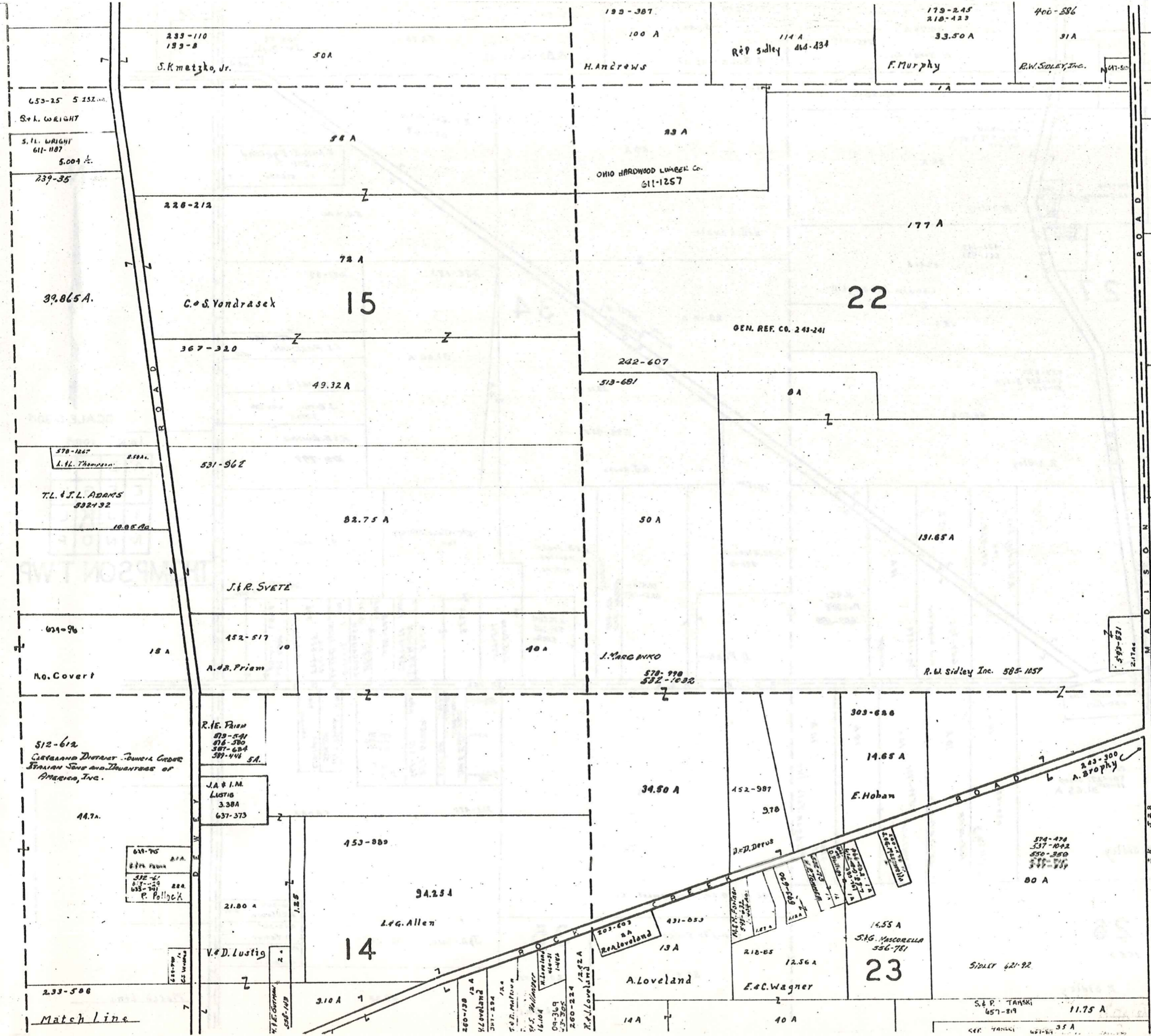


SCALE 1" = 300'  
JAN 1980

A	B	C	D
E	F	G	H
I	J	K	L
M	N	O	P

THOMPSON TWP.  
407





N

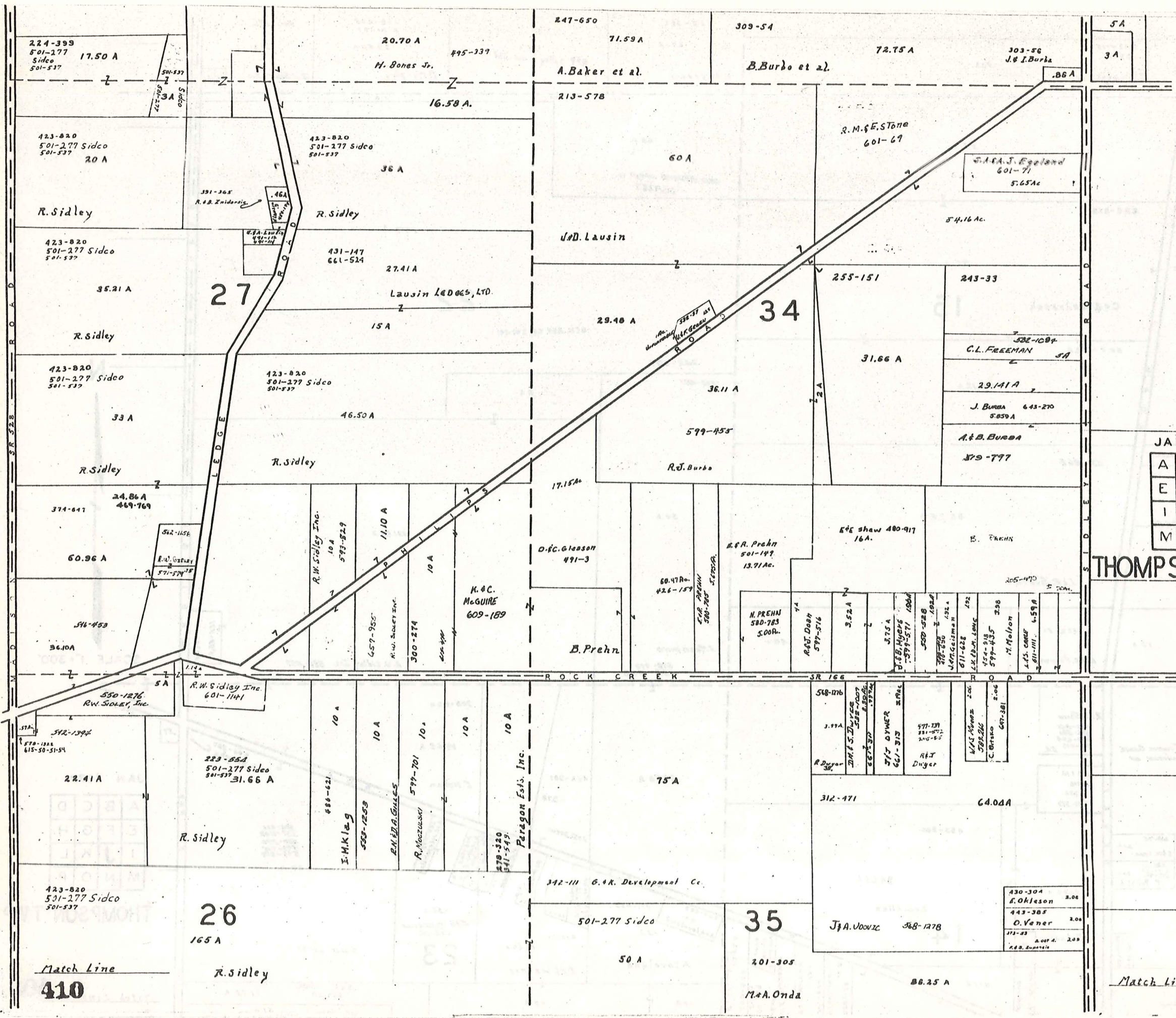
SCALE 1" = 300'

JAN 1980

A	B	C	D
E	F	G	H
I	J	K	L
M	N	O	P

**THOMPSON TWP**

Match Line **409**



SCALE 1" = 300'

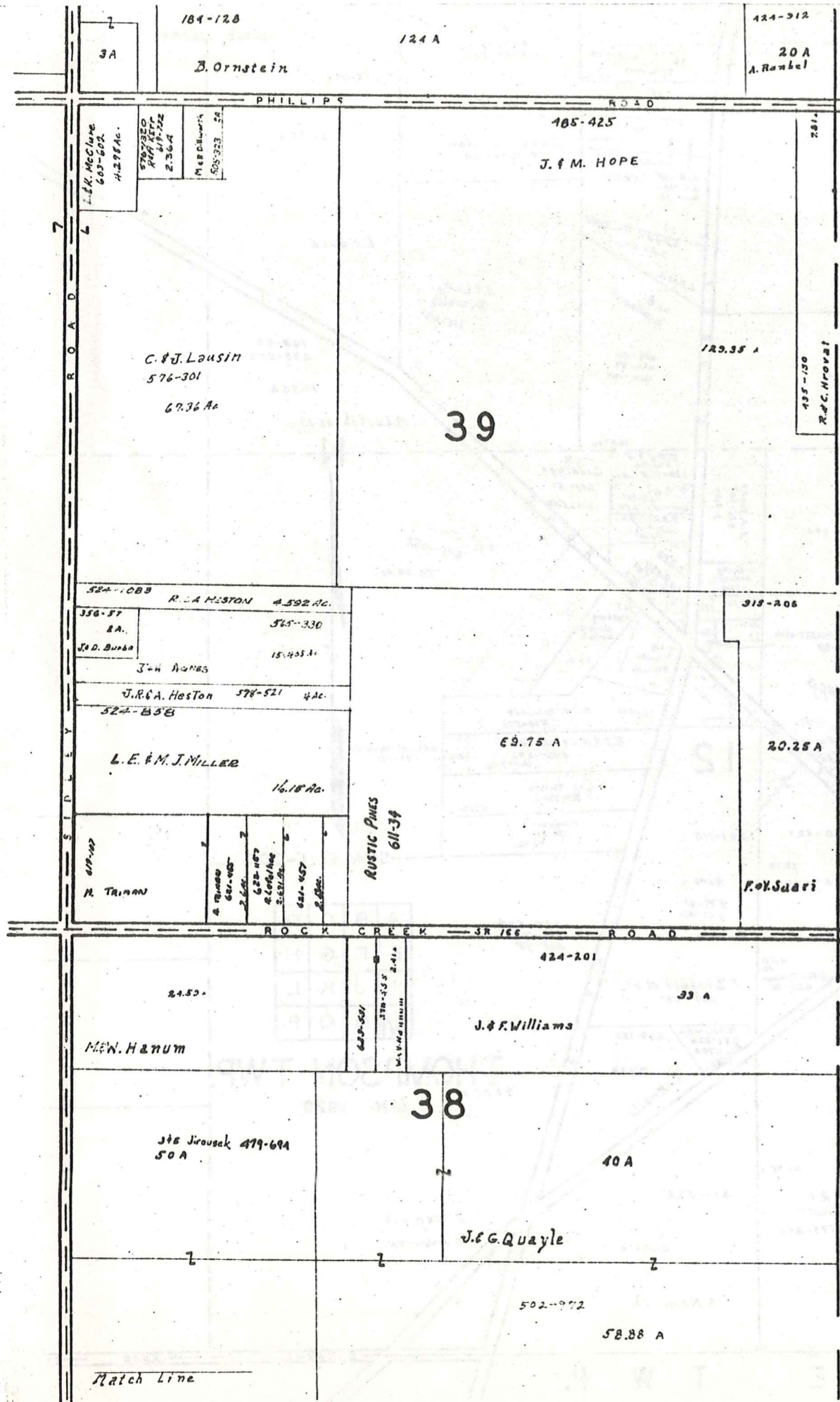
JAN 1980

A	B	C	D
E	F	G	H
I	J	K	L
M	N	O	P

THOMPSON TWP.

Match Line  
410

Match Line



ASHTABULA COUNTY

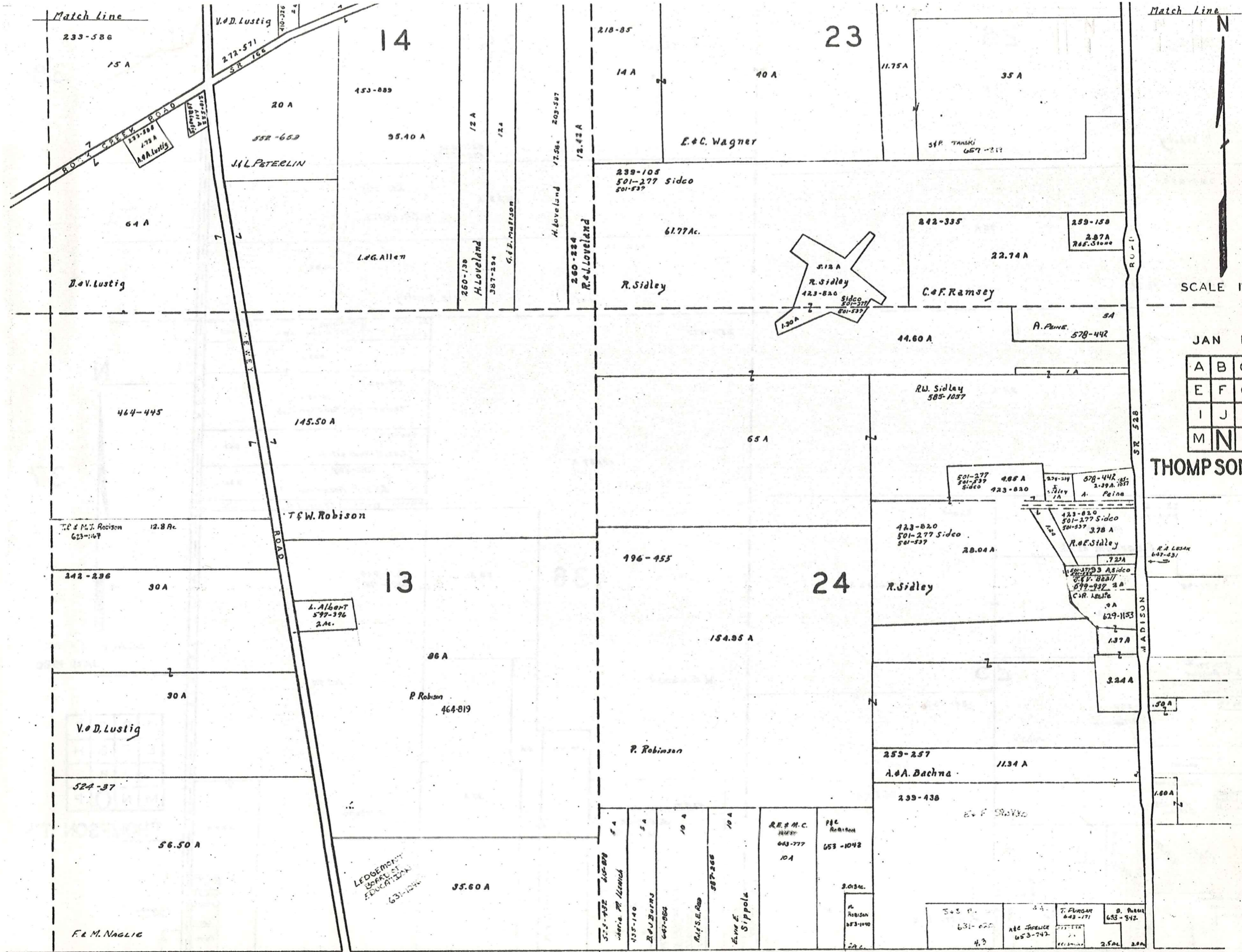


SCALE 1" = 300'  
JAN 1980

A	B	C	D
E	F	G	H
I	J	K	L
M	N	O	P

THOMPSON TWP.  
Match Line 411





JAN 1980

A	B	C	D
E	F	G	H
I	J	K	L
M	N	O	P

THOMPSON TW

Match Line

Match Line

423-820  
501-277 Sidco  
501-537

26

501-277 Sidco  
501-537

35

38

165 A

50 A

86.25 A

R. Sidley

M. Onda et al.  
520-837  
532-386

205-275

49.83 A

603-125

90 A

R. & B. Foitz

L. Ramsey et al.

242-77

49.83

571-453

254-437

R. M. Diacofsky

94 A

506-177  
S. Symmes  
517-130, 1185  
R. C. Hill  
2.98 A  
785 A

0.63 A

N

154-142  
16.35 A  
Kennemetal Rod & Gun Club

J. A. Rull:

131.67 A

300-143  
A. N. Demukaitis  
9.62 A

37

556-637  
G. & J. L. Goehring  
9.62 A

224-6  
234-169

224-5

26.30 A

F. Barnum et al.

331-281 232-116 L. Goudy et al. 5.78 A

251-95

60.92 A

36

20 A

427-814  
661-711

SCALE 1" = 300'  
JAN 1980

25.50 A

106.50 A

W. Anderson

25

188-439

74.59 A

35A

J. Yelcho

14.50 A

A	B	C	D
E	F	G	H
I	J	K	L
M	N	O	P

THOMPSON TWP

571-771 235 A  
S. A. Bonick  
374-67  
B. R. Turner  
2 A

50 A

424-583

B. & B. Turner

43.13 A

B. Bacon  
631-347

R. S. Turner

599-623  
5.176 Ac.

F. S. Zingale  
615-977

H. W. Turner  
615-105

816  
Turner

100' f

D. Penotti  
647-543

512-488  
J. J. Burrows

W. Gurich et al.

M. B. Dinincenzo  
350-1241  
20.00 Ac.

14 A

239-440  
G. Kimak  
5 A

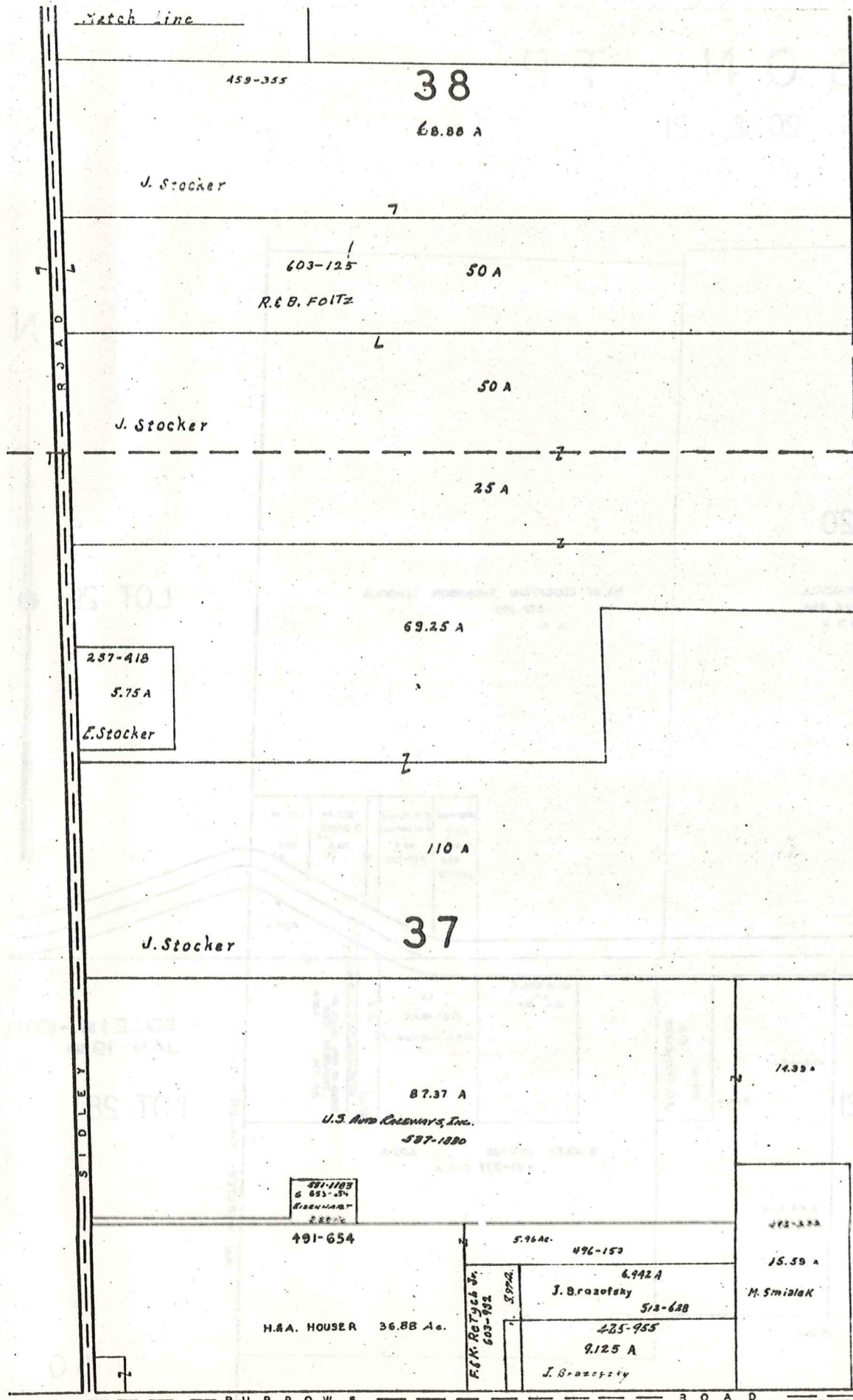
W. M. Bower

7 E. Hobbs  
281-281  
Cam.

414

M O N T V I L L E

T O W N S H I P



A S H T A B U L A C O U N T Y

Match Line



JAN 1970

SCALE 1" = 300'

A	B	C	D
E	F	G	H
I	J	K	L
M	N	O	P

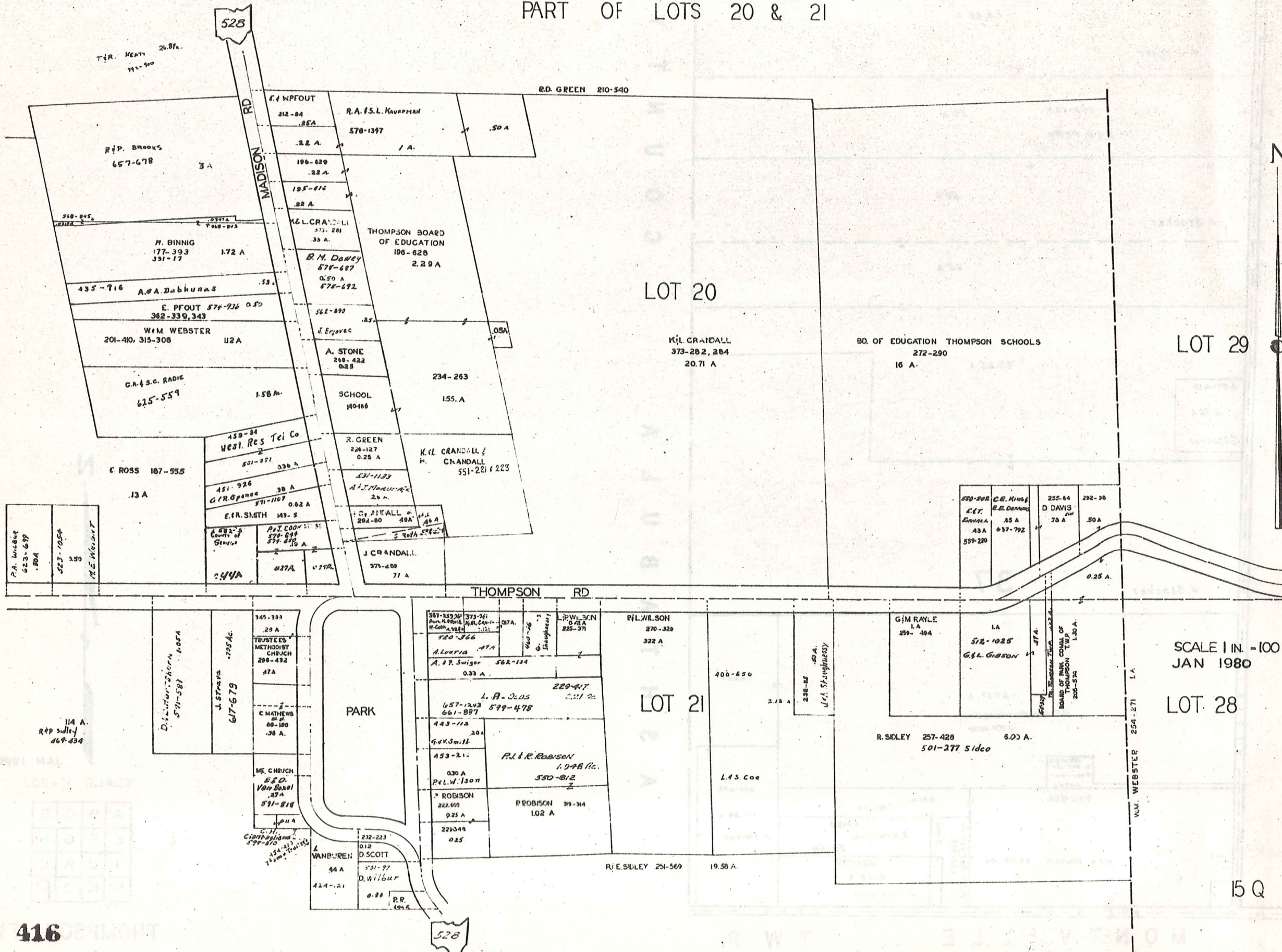
415

MONTVILLE TWP.

THOMPSON TWP.

# THOMPSON TP

PART OF LOTS 20 & 21



SCALE 1 IN. = 100 FT  
JAN 1980

15 Q

